

For stable water supply!

CX-1101 series

FLOW SET VALVE

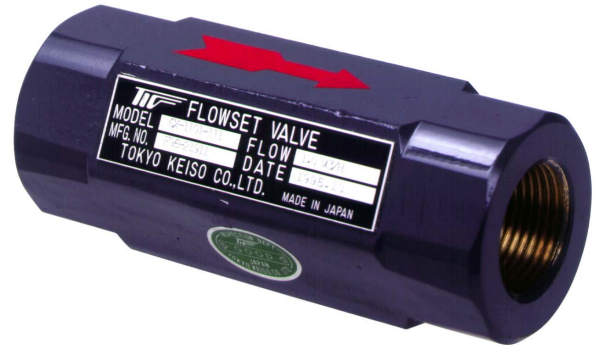
GENERAL

CX-1101 FLOW SET VALVE is a constant flow valve for liquids. Even supply or load pressure of process changes, CX-1101 maintains constant flow of liquid.

CX-1101 FLOW SET VALVE is suitable for water / hot water lines in office buildings, apartment buildings, factories and other buildings where stable water / hot water supply is required.

A setup at site is unnecessary because flow rate is set up in the high precision in accordance with customer's specifications in our factory.

CX-1101 can be installed to any direction of process i.e. horizontal or vertical.



FEATURES

- ☐ All metallic construction and high durability.
- ☐ Simple, self-regulating mechanism
- ☐ Cost effective and Quick delivery
- ☐ Easy screw connection
- ☐ Stable and accurate control characteristics
- ☐ Brass and SUS316 material are available to meet fluid corrosion

STANDARD SPECIFICATION

Size	15mm, 20mm, 25mm, 40mm
Fluid	Water and other liquids*
Max.line press.	1MPa
Control differential press.	0.03 ~ 0.7MPa
Control accuracy	± 5%
Max.fluid temp.	150°C
Process connection	Rc thread, NPT(F), Other female threads

*Max.viscosity is 10cP. Not suitable for liquids with solids

MODEL CODE

Model code		Description
CX-1101-		
Material	1	Brass(JIS C3604)/SUS304
	2	SUS316
Size	0	15mm
	1	20mm
	2	25mm
	3	40mm
Process connection	1	Rc thread
	2	NPT(F)
	3	Other female thread

SETTING RANGE

Flow rate can be set as per the following table.
Specify setting flow rate.

Water (Sp.Gr.1.0g/cm³)

Size	Possible setting range (Qw)
15mm	3~10 L/min
20mm	5~25 L/min
25mm	10~40 L/min
40mm	25~70 L/min

Refer to an upper table after you calculate (Qw) by the bottom formula in case of liquid density is except for 1.0.

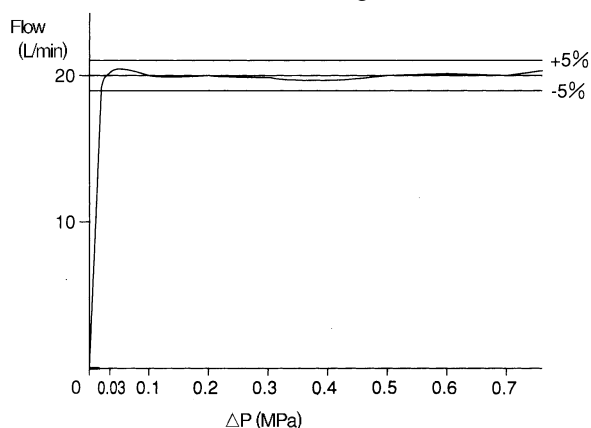
$$Q_w = Q \times \sqrt{\frac{\gamma}{1.0}}$$

Q : The setup flow rate of the actual liquid

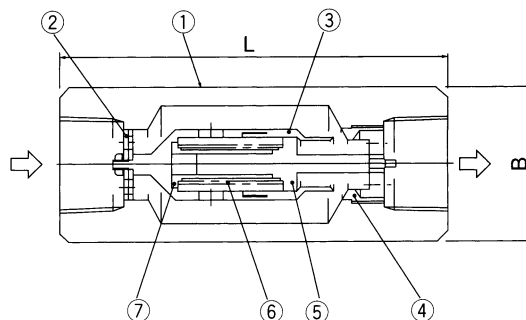
γ : Density of actual liquid

CONTROL CHARACTERISTICS

CX-1101-□2□, 20L/min setting



STRUCTURE



B indicates face to face dimension of Hex. Material.

DIMENSION

Size	L	B	MASS (kg)
15mm	90mm	32mm	0.6
20mm	110mm	41mm	1.0
25mm	130mm	46mm	1.5
40mm	150mm	65mm	2.8

MATERIAL

No.	Parts name	CX-1101-1□□	CX-1101-2□□
①	Body	SCS14 (Cast stainless steel)	SCS14 (Cast stainless steel)
②	Target plate	SUS304	SUS316
③	Valve	Brass (JIS C3604)	SUS316
④	Valve sheet	Brass (JIS C3604)	SUS316
⑤	Valve guide	SUS304	SUS316
⑥	Spring	SUS304	SUS316
⑦	Spring guide	Brass (JIS C3604)	SUS316

ORDER INFORMATION

Specify the following for order / inquiry

1. Model code
2. Setting flow rate (L/min)
3. Flow direction (Horizontal, Top → Bottom, Bottom → Top)
4. Density and Viscosity of the fluid

* Specification is subject to change without notice.

TOKYO KEISO CO., LTD.

Head Office : Shiba Toho Building, 1-7-24 Shibakoen, Minato-ku, Tokyo 105-8558

Tel : +81-3-3431-1625 (KEY) ; Fax : +81-3-3433-4922

e-mail : overseas.sales@tokyokeiso.co.jp ; URL : <http://www.tokyokeiso.co.jp>

