



# ***AUTOMATIC CONTROLS***

**SAGInoMIYA**

# RESIDENTIAL & COMMERCIAL AIR CONDITIONER

OEM



## Type UKV

### ELECTRONIC EXPANSION VALVES

Max. working press.: 4.2MPa  
Capacity: 2.9 to 8.2 U.S.R.T. (R22)  
2.3 to 6.4 U.S.R.T. (R134a)  
2.1 to 5.8 U.S.R.T. (R404A)  
3.0 to 8.4 U.S.R.T. (R407C)  
3.4 to 9.6 U.S.R.T. (R410A)  
Fluid temp.: -30 to 70°C  
Power supply: 12V.DC



Type SCX

EXPANSION VALVES  
Max. allowable press.: 3.0MPa  
Capacity: 3.25 to 14.4 U.S.R.T. (R22)  
Refrigerant: R22, R134a, R404A, R407C, R410A



Type QCX/RXC

EXPANSION VALVES  
Max. allowable press.: 3.0MPa  
Capacity: 0.22 to 4.69 U.S.R.T. (R22)  
Refrigerant: R22, R134a, R404A, R407C, R410A



Type ATX

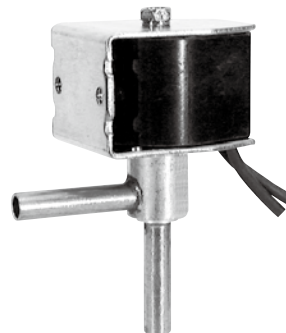
EXPANSION VALVES  
Max. allowable press.: 1.4 to 3.3MPa  
Capacity: 1.0 to 81 U.S.R.T. (R22)  
Refrigerant: R22, R134a, R404A, R407C, R410A



Type ARX

EXPANSION VALVES  
Max. allowable press.: 3.3MPa  
Capacity: 0.8 to 2.4 U.S.R.T. (R22)  
Refrigerant: R22, R134a, R404A, R407C

OEM



## Type NEV/VPV/TEV

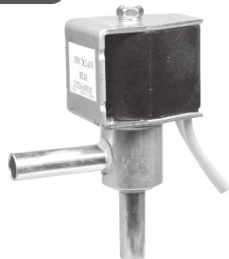
### SMALL SOLENOID VALVES for refrigerant

Max. working press.: 3.3, 4.15MPa  
Connections: 1/4" to 1/2"  
Operating press. differential: 0 to 3.6MPa  
Fluid temp.: -30 to 120°C  
Ambient temp.: -20 to 50°C  
Cv value: 0.037 to 3.0



Type SEV/REV

SOLENOID VALVES for Refrigerant  
Max. working press.: 2.94, 4.2MPa  
Connection: 1/4" to 3-1/2"



Type SPV

SOLENOID VALVES for Dehumidifying  
Function  
Max. working press.: 4.2MPa  
Type: Normal-Open

OEM



Type BPV

BI-FLOW SOLENOID VALVES  
Max. working press.: 3, 4.2MPa  
Connection: 3/8" to 1-1/2"

OEM



Type DPR

PRESSURE REGULATING VALVES  
Max. working press.: 2.9MPa  
Connection: 7/94(I.D.)

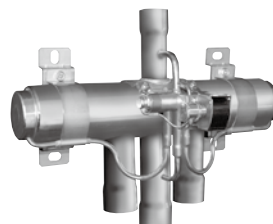
OEM



## Type STF

### 4-WAY REVERSING VALVES

Max. working press.: 4.15, 4.2MPa  
Capacity:  
0.46 to 55.5 U.S.R.T. (R22)  
0.34 to 42.7 U.S.R.T. (R134a)  
0.46 to 55.5 U.S.R.T. (R407C)  
0.51 to 64.0 U.S.R.T. (R410A)  
Operating press. differential:  
0.3 to 3.1MPa  
Fluid temp.: -20 to 120°C, -20 to 130°C



Type VHV

4-WAY REVERSING VALVES  
Max. working press.: 4.15MPa  
Capacity: 65.4 to 102 U.S.R.T. (R410A)



Type AWR/VWR

PRESSURE ACTUATED WATER  
REGULATING VALVES  
Max. working press.: 1.96, 4.2MPa  
Connection: 3/8" to 2-1/2"

# RESIDENTIAL & COMMERCIAL AIR CONDITIONER



Type ACV/BCV

CHECK VALVES  
Max. working press.: 3 to 4.15MPa  
Connection: 1/4" to 1"



Type NBV

PACKLESS VALVES  
Max. working press.: 2.94, 3.53MPa  
Connection: 1/4" to 3/4"



Type ADV

PACKLESS VALVES  
Max. working press.: 3.6MPa  
Connection: 1/4" to 7/8"

OEM



Type SDP

DRAIN PUMPS  
Pump head: 200 to 1125mm  
Rated voltage: 220 to 240V.AC

OEM



## Type ACB/LCB

### SMALL PRESSURE CONTROLS

(DISC TYPE) Range: 0.7 to 4.5MPa  
0.1 to 0.7MPa  
Contact function: SPST, SPDT  
Electrical ratings: 250V.AC 1 to 4A  
Press. connections:  
1/4" flare, 1/4" solder, etc.



Type SYS/SNS

SINGLE FUNCTION PRESSURE  
CONTROLS  
(BELLOWS TYPE) Range:  
-0.06 to 3.5MPa



Type DYS/DNS

DUAL PRESSURE CONTROLS  
(BELLOWS TYPE) Range:  
High 0.8 to 3MPa  
Low -0.06 to 0.6MPa



Type WNS/ONS

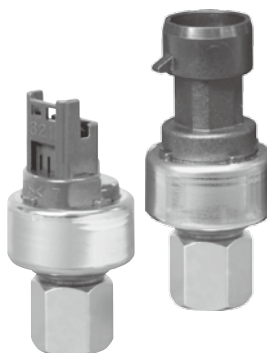
DIFF. PRESSURE CONTROLS  
Range of press. diff.: 0.03 to 0.35MPa



Type XSK

PRESSURE SENSORS  
Range: -0.05 to 1MPa  
0 to 5MPa, etc.  
Output: 4 to 20mA

OEM



## Type NSK

### PRESSURE SENSORS

Range: 0 to 1MPa, 0 to 5MPa, etc.  
Output: 0.5 to 4.5V.DC  
Fluid temp.: -30 to 120°C  
Power supply: 5V.DC  
Electrical connectors:  
Molex connector  
Packard connector  
Lead wire direct connector



Type TNS

TEMPERATURE CONTROLS  
Range: -45 to 150°C



Type RGE

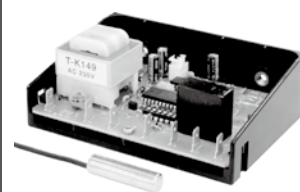
CONDENSER FAN SPEED  
CONTROLLERS (SINGLE PHASE)  
Range: 0.8 to 3.9MPa



Type XGE

CONDENSER FAN SPEED  
CONTROLLERS (SINGLE PHASE)  
Range: 1 to 3.9MPa

OEM



Type DDE

DEFROST CONTROLS  
Range: -5 to 10°C

# COMMERCIAL REFRIGERATION



## Type SCX

### EXPANSION VALVES

Max. allowable press.: 3.0MPa  
 Capacity: 3.25 to 14.4 U.S.R.T. (R22)  
 4.76 to 11.8 U.S.R.T. (R134a)  
 1.92 to 9.06 U.S.R.T. (R404A)  
 5.95 to 14.8 U.S.R.T. (R407C)  
 6.38 to 15.8 U.S.R.T. (R410A)  
 Equalizer: External  
 Refrigerant: R22,R134a,R404A,  
 R407C,R410A  
 Connection: 1/2" x 5/8", 5/8" x 7/8"



## Type QCX/RCX

### EXPANSION VALVES

Max. allowable press.: 3.0MPa  
 Capacity: 0.22 to 4.69 U.S.R.T. (R22)  
 0.24 to 3.64 U.S.R.T. (R134a)  
 0.13 to 2.96 U.S.R.T. (R404A)  
 0.32 to 4.83 U.S.R.T. (R407C)  
 0.35 to 5.18 U.S.R.T. (R410A)  
 Equalizer: Internal/ External  
 Refrigerant: R22,R134a,R404A,  
 R407C,R410A  
 Connection: 3/8" x 1/2"



Type ATX

EXPANSION VALVES  
 Max. allowable press.: 1.4 to 3.3MPa  
 Capacity: 1.0 to 81 U.S.R.T. (R22)  
 Refrigerant: R22,R134a,R404A,R407C,R410A



Type AEX

EXPANSION VALVES  
 Max. allowable press.: 1.4MPa  
 Capacity: 0.5 to 12.8 U.S.R.T. (R22)  
 Refrigerant: R22,R23,R134a,R404A



Type PKV

ELECTRONIC EXPANSION VALVES  
 Max. working press.: 4.2MPa  
 Capacity: 1.0 to 5.6 U.S.R.T. (R404A)  
 Refrigerant: R22, R134a, R404A, R407C, R410A



Type GKV

ELECTRONIC EXPANSION VALVES  
 Max. working press.: 4.2MPa  
 Capacity: 2.08 to 11.15 U.S.R.T. (R404A)  
 Refrigerant: R22, R134a, R404A, R407C, R410A



Type MKV

MOTOR VALVES  
 Max. working press.: 3.3MPa  
 Cv value: 2.82



Type IEV

3-WAY SOLENOID VALVES  
 Max. working press.: 2.94MPa  
 Connection: 5/8" to 1-3/8"



## Type SEV/REV

### SOLENOID VALVES for Refrigerant

Max. working press.: 2.94, 4.2MPa  
 Connection: 1/4" to 3/4" flare  
 3/8" to 1-5/8" solder  
 7/8" to 3-1/2" flange, etc  
 Operating press. diff.: 0 to 2.45MPa  
 Fluid temp.: -40 to 125°C  
 Ambient temp.: -30 to 50°C  
 Cv value: 0.25 to 74



Type SGV/HGV

PACKED VALVES  
 Max. working press.: 2.94MPa  
 Connection: 1/4" to 1"



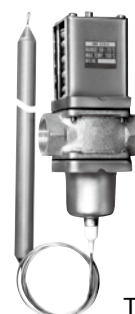
Type ACV/BCV

CHECK VALVES  
 Max. working press.: 3 to 4.15MPa  
 Connection: 1/4" to 1"



Type AWR/VWR

PRESSURE ACTUATED WATER  
 REGULATING VALVES  
 Max. working press.: 1.96, 4.2MPa  
 Connection: 3/8" to 2-1/2"



Type OWR

TEMPERATURE ACTUATED  
 WATER REGULATING VALVES  
 Max. water press.: 0.98MPa  
 Connection: 1/2" to 2-1/2"



# COMMERCIAL REFRIGERATION



Type EPR/SPR

PRESSURE REGULATING VALVES  
Max. working press.: 2.5MPa  
Connection: 1/2" to 1-3/8"



Type VPR

REGULATING VALVES  
for Hot Gas Line  
Max. working press.: 2.5MPa  
Connection: 1/2" to 5/8"



Type HPR

PRESSURE REGULATING VALVES  
Max. working press.: 2.9, 4.17MPa  
Connection: 1/2" to 7/8"



Type RGE

CONDENSER FAN SPEED  
CONTROLLERS (THREE PHASE)  
Range: 0.8 to 3.9MPa



## Type SYS/SNS

### SINGLE FUNCTION PRESSURE CONTROLS

(BELLOWS TYPE) Range:  
-0.06 to 3.5MPa  
Range of press. diff.: 0.015 to 1.5MPa  
Contact function: SPDT  
Electrical ratings:  
125/ 250V.AC 0.5 to 12A  
Press. connections: 1/4" flare, etc.



## Type DYS/DNS

### DUAL PRESSURE CONTROLS

(BELLOWS TYPE) Range:  
High 0.8 to 3MPa  
Low -0.06 to 0.6MPa  
Range of press. diff.:  
High Approx. 0.4 fixed  
Low -0.04 to 0.4MPa  
Contact function: DPDT  
Electrical ratings:  
125/ 250V.AC 0.5 to 12A  
Press. connections: 1/4" flare, etc.



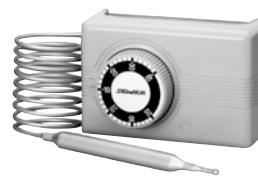
Type WNS/ONS

DIFF. PRESSURE CONTROLS  
Range of press. diff.: 0.03 to 0.35MPa



Type CFE/BFE

DIGITAL PRESSURE CONTROLS  
Range: -0.095 to 5MPa



Type ALS/BLS

TEMPERATURE CONTROLS  
Range: -60 to 90°C



Type TNS/INS

TEMPERATURE CONTROLS  
Range: -45 to 150°C



Type LWS

TEMPERATURE CONTROLS  
Range: -35 to 240°C



Type ULE & TEK

DIGITAL THERMOSTATS  
Range: -50 to 100°C



Type TNE

DIGITAL THERMOSTATS  
DIN 48x48  
Range: -70 to 140°C (Type PEK)



Type AKM

TEMPERATURE RECORDERS  
Range: -40 to 54°C

# AIR CONDITIONING



Type WEV

SOLENOID VALVES for water/ glycol  
Max. working press.: 0.98MPa  
Connection: 1/2" to 3"



Type MJV

MOTORIZED BALL VALVES  
Max. working press.: 1.6MPa(Water)  
Connection: 1/2" to 2"



Type BJV

SMALL MOTOR OPERATED VALVES  
Max. working press.: 1MPa(Water)  
Connection: 1/2" to 3/4"



Type WGK/NVK

2-WAY&3-WAY CONTROL VALVES  
WITH MOTOR ACTUATOR  
Max. working press.: 0.98, 1.96MPa  
Connection: 1/2" to 10"



Type AWK

DAMPER MOTOR ACTUATORS  
Rotation Angle: 90°  
Torque: 14.7N·m



Type EWS

TEMPERATURE CONTROLS  
Range: 0 to 160°C



Type PWS

PROPORTIONAL TEMPERATURE  
CONTROLS  
Range: -10 to 120°C



Type WRS

ROOM THERMOSTATS  
Range: 10 to 30°C



Type LRS

ROOM THERMOSTATS  
Range: 10 to 30°C



Type AHS

ROOM HUMIDISTATS  
Range: 30 to 90%RH



Type DIS

HUMIDISTATS Application for Duct Unit  
Range: 30 to 70%RH



Type FQS

FLOW SWITCHES  
Range: 18 to 2268L/min

# CONSTRUCTION MACHINERY AND HYDRAULICS, VEHICLES, SHIP

OEM



Type KSK

PRESSURE SENSORS  
Range: 0 to 5MPa, etc.  
Output: 0.5 to 4.5V.DC  
Press. connections: G1/4

OEM



Type HCB-K

SMALL PRESSURE CONTROLS  
(DISC TYPE) Range: 0.3 to 2.5MPa  
Press. connections: R1/8, G1/8, G1/4

OEM



Type HCB

SMALL PRESSURE CONTROLS  
(DISC TYPE) Setting: off 2.5 on 2.0MPa

OEM



Type JCK

AIR CONDITIONING CONTROLLER

# HOT-WATER SUPPLY UNITS

OEM



Type QJV

**ELECTRIC PROPORTIONAL VALVES**  
Max. working press.: 1MPa  
Flow rate: 1.4L/min at 1000 pulse  
15L/min or more at 3000 pulse

OEM



Type HEV

**SOLENOID VALVES for Water**  
Max. working press.: 0.1, 0.29MPa  
Cv value: 0.94 to 1.1

OEM



Type ELK

**FLOW SENSORS**  
Range: 1.5 to 25L/min

OEM



Type #03

**BI-METAL DISC THERMOSTATS**

OEM



Type CRV

**PRESSURE REDUCING VALVES**  
Max. working press.: 750kPa  
Setting press.: 170kPa

OEM



Type WSV/VSV

**RELIEF VALVES**  
Withstand press. performance: 600kPa  
Start to discharge pressure: 190kPa

OEM



Type CAV

**AIR RELEASE VALVES**  
Max. working press.: 300kPa  
Max. working temp.: 100°C

OEM



Type XNE

**SUPERHEAT CONTROLLER**  
Power supply: AC24V/ DC24V  
Superheat temp. range: -30 to 30°C  
E.E.V.: UKV series

OEM



Type UKV-J/JKV

**ELECTRONIC EXPANSION VALVES**  
Max. working press.: 15MPa  
Cv value: 0.065 to 0.17

OEM



Type HPV

**SOLENOID VALVES**  
Max. working press.: 13, 13.8MPa  
Cv value: 0.028, 0.038

OEM



Type CCB

**SMALL PRESSURE CONTROLS**  
Setting: on 10 off 15MPa  
Max. working press.: 15MPa  
Press. connections: 1/4" solder

OEM



Type HSK

**PRESSURE SENSORS**  
Range: 0 to 15MPa  
Output: 5V.DC  
Press. connections: 1/4" solder

# CONSTRUCTION MACHINERY AND HYDRAULICS, VEHICLES, SHIP

OEM



Type DSE

**ELECTRONIC 2-STEP THERMOSTATS**  
Range: -30 to 60°C

OEM



Type VCU

**UNIT OF VISCOSITY CONTROL**

OEM



Type SNS-P

**PRESSURE CONTROLS (WATER PROOF MODELS)**  
Range: -0.06 to 3.5MPa

OEM



Type TNS-P

**TEMPERATURE CONTROLS (WATER PROOF MODELS)**  
Range: -45 to 150°C

SAGINOMIYA, founded in 1948, is a leading manufacturer of a wide range of high quality, energy-saving Automatic Controls for Refrigeration, Cooling, Heating, Air conditioning equipment and Hot Water Supply systems. We have much experience in supplying both the domestic and overseas markets with our full line of Automatic Controls.

SAGINOMIYA produces Pressure Controls, various kinds of Thermostats, Flow Switches, Expansion Valves, Solenoid Valves, Valves in General, Metal Bellows and Testing Machine. To keep SAGINOMIYA a front runner in modern day technology, we are making a substantial investment and extensive research in developing a new line of Electronic Controls to meet today's demands.



Headquarters



Sales Headquarters



Tokorozawa Plant



Sayama Plant



**FOSHAN HUALU AUTOMATIC CONTROLS LIMITED (China)**  
No.61 Wenhua Nanlu, Chancheng District,  
Foshan, Guangdong, China  
Sales & Manufacturing  
Tel: +86 757 8383 1558 Fax: +86 757 8383 1218



**SAGINOMIYA AMERICA, INC. (USA)**  
655 Metro Place South suite 700, Dublin,  
Ohio 43017, U.S.A.  
Sales  
Tel: +1 614 766 7390 Fax: +1 614 766 7391



**Danfoss Saginomiya Sp. z o.o. (Poland)**  
ul. Chrzanowska 5, 05-825 Grodzisk  
Mazowiecki, Poland  
Manufacturing  
Tel: +48 22 7550 500 Fax: +48 22 7550 505



**Saginomiya (Thailand) Co., Ltd. (Thailand)**  
159 Serm-mit Tower 19th Fl., Room No.1903/1  
Sukhumvit 21 Rd., Klongtoey-Nua,  
Wattana, Bangkok 10110, Thailand  
Sales & Manufacturing  
Tel: +662 260 8364 Fax: +662 260 8366



**RIMSAGINOMIYA, S.A. DE C.V. (Mexico)**  
Av. Central No. 126, Parque Industrial  
Toluca 2000, Km. 52.8 Carretera Toluca  
Naucalpan, C. P. 50200, Toluca, Edo. de  
Mexico, Mexico  
Sales & Manufacturing  
Tel: +52 722 279 3680 Fax: +52 722 279 0234



**SAGINOMIYA EUROPE Sp. z o.o. (Poland)**  
Aleje Jerozolimskie 212 02-486  
Warsaw, Poland  
Sales  
Tel: +48 22 101 30 00 Fax: +48 22 101 30 01



#### NOTES FOR SAFETY

Failure to read and follow all instruction carefully before installing or operating the product could cause personal injury and/or property damage.

Specifications are subject to change without notice.

# SAGINOMIYA

## SEISAKUSHO, INC.

13-1, Ichibancho, Chiyoda-ku, Tokyo  
102-0082 Japan  
Tel: +81 3 5843 3338 Fax: +81 3 5843 3364  
E-mail: [inter@saginomiya.co.jp](mailto:inter@saginomiya.co.jp)  
URL: <http://www.saginomiya.co.jp>