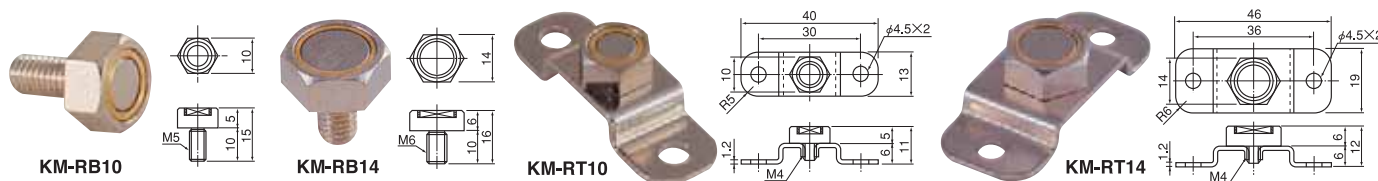


Model KM-RB HEXAGONAL PERMANENT MAGNETIC HOLDER (WITH MALE THREAD)

Model KM-RT HEXAGONAL PERMANENT MAGNETIC HOLDER (WITH PLATE)



[Application]

This holder is used as a jig.
This holder is used for transporting light workpieces in manufacturing lines, etc.

[Features]

- This holder can be easily attached to any place, since its top end is threaded.
- When used in combination with the plate (type with plate) as an accessory, the holders can be installed in places where tapped holes can not be opened.
- Since this holder is plated with nickel, it can be used under various circumstances.

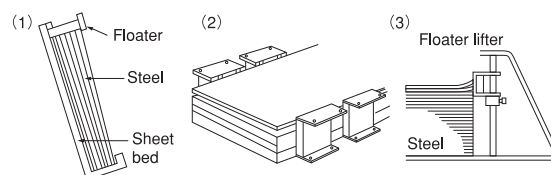
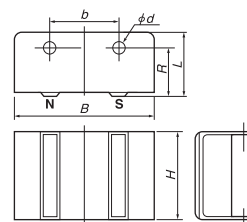
Model	Holding Power	Mass
KM-RB10	10N (1kgf)	5g/0.011 lb
KM-RB14	40N (4kgf)	10g/0.022 lb
KM-RT10	10N (1kgf)	10g/0.022 lb
KM-RT14	40N (4kgf)	18g/0.039 lb

※ The holding power applies to SS400, thickness 10 mm and ground surface.

MAGNETIC TOOLS

Model KF STEEL SHEET SEPARATOR "FLOATER" * (STANDARD TYPE)

Steel sheet separator



EXAMPLE OF APPLICATION

(1) «DELIVERY OF LARGE IRON SHEET»

Use it by standing sheets vertically against a wall, etc.
You can make good use of the separating force if the Floater is used by standing large sheets in this manner ; thereby minimizing the effect of the weight of the sheets and enhancing the separating force.

(2) «SEPARATION OF STUCK SHEETS»

Efficient if you use several Floaters in combination.
For separation of large steel sheets or other iron sheets stuck with oil or grease, increase the number of Floaters.

(3) «SHEETS PILED UP HIGHLY»

Use a lifter.
If steel sheets are piled up high, use a Floater on a lifter (Most adequate level of the Floater is a bit higher than the top sheet).

[Application]

Most suitable for removing iron or steel sheets one by one thereby facilitating feeding in automatic steel sheet feeding lines or for separating each iron sheet and for feeding it into a machine (for press or shearing operation).

[Features]

- The highest separating capacity is ensured by two rails on the magnetic polar surface.
- Not only steel sheets but also finished pressed workpieces, circular workpieces and irregular workpieces can be separated at fixed intervals by use of several separators.
- Compact type with highly efficient ferrite magnet. It can be attached easily to machines. Couple it in conformity with the size, shape and weight of the steel sheets in use.
- One set consists of two units.

● One set consists of two units.

[mm (in.)]

Model	Dimensions				Setting Face			Mass
	B	H	L	ℓ	No. of Hole	φd	b	
KF-5B	65 (2.55)	87 (3.42)	55.5 (2.18)	45.0 (1.77)	4	8 (0.31)	40 (1.57)	1.0kg/2.2 lb×2
KF-10	125 (4.92)		61.5 (2.42)	51.5 (2.02)		8 (0.31)	56 (2.20)	2.0kg/4.4 lb×2
KF-20		127 (5.00)	66.5 (2.61)	56.5 (2.22)			8 (0.31)	80 (3.15)
KF-30	210 (8.26)		72.0 (2.83)	60.0 (2.36)		11 (0.43)		150 (5.90)
KF-40		254 (10.0)						

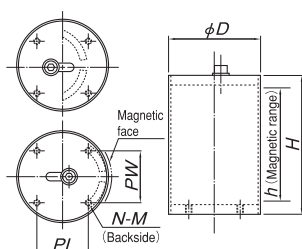
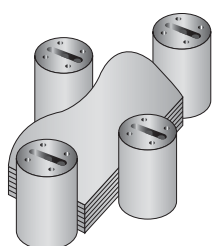
[mm (in.)]

Model KF-HC POWERFUL CIRCULAR STEEL SHEET SEPARATOR "FLOATER" *



KF-HC0813
(An example of special fabrication)

An example of usage



[Application]

Used to separate irregular workpieces (steel sheets) that do not have a straight line of sufficient length.

[Features]

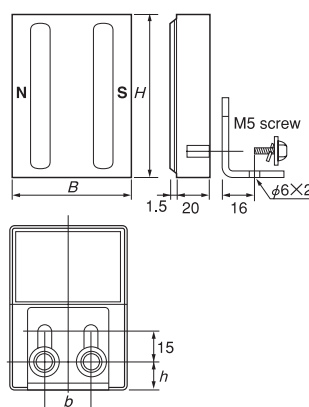
- The magnetic force can be adjusted by changing the location of the internal magnet.
- Small but powerful.

Model	Dimensions						Mass
	D	H	h	PL	PW	N	
KF-HC0813	76.3 (3.00)	130.0 (5.11)	100 (3.93)	—	60 (2.36)	2 (0.07)	Approx. 2kg/4.4 lb
KF-HC1218	114.3 (4.50)	175.0 (6.89)	140 (5.51)	65 (2.55)	65 (2.55)	4 (0.15)	Approx. 7kg/15.4 lb
KF-HC1424	139.8 (5.50)	235.0 (9.25)	195 (7.67)	80 (3.15)	80 (3.15)	M10 (0.39)	Approx. 14kg/30.8 lb

[mm (in.)]

Model KF-T STEEL SHEET SEPARATOR "FLOATER" * (THIN TYPE)

Thin type



[Application]

Most suitable for installation in narrow spaces because it is thin and compact.

[Features]

- Ultra-thin type 20mm thick.
- This separator can be installed in a wide variety of locations, for example, direct installation on a wall face or installation with the L-shaped attachment.
- The installing position is vertically adjustable with the L-shaped attachment.
- One set consists of two units.

Model	Dimensions				Mass
	B	H	b	h	
KF-T5A	62 (2.44)	87 (3.42)	25 (0.98)	13.5	0.7kg/1.5 lb×2
KF-T10	102 (4.01)	87 (3.42)	50 (1.96)	13.5	1.1kg/2.4 lb×2
KF-T20	102 (4.01)	127 (5.00)	50 (1.96)	13.5	1.6kg/3.5 lb×2

PRINCIPLE OF FLOATER

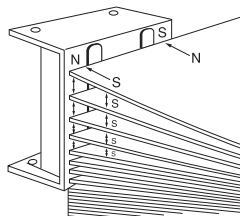
The Floater induces the same magnetic poles in stacked steel sheets to separate the sheets by the repelling force of the same poles.

FLOATING DISTANCE

When a pair of Floaters are positioned on each side of stacked sheets on the longitudinal sides, the distance the top first sheet is floated from the second sheet is as shown in the table.

This distance applies when the Floaters are positioned 50 mm away from the edge of sheets and the initial position of the first sheet is 50 mm below the top end of the Floaters.

Note, however, if sheets are warped or oil is sticking to them, the distance will become shorter.

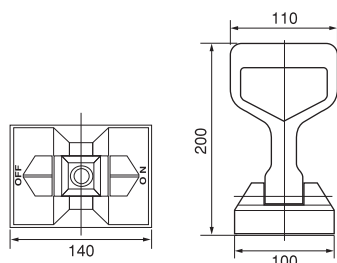
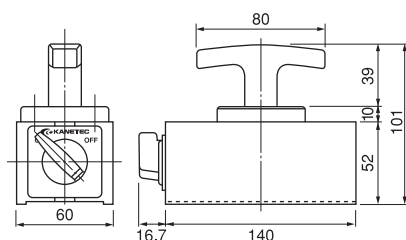


Test steel Model	Thickness				Size
	1.0	1.6	2.0	3.2	
KF-5B	18 (0.7)	14 (0.55)	10 (0.39)	5 (0.19)	150 (5.90) × 450 (17.7)
KF-10	14 (0.55)	12 (0.47)	6 (0.23)	—	300 (11.8) × 900 (35.4)
KF-20	26 (1.02)	17 (0.66)	9 (0.35)	—	
KF-30	33 (1.29)	26 (1.02)	18 (0.70)	7 (0.27)	
KF-40	34 (1.33)	28 (1.10)	20 (0.78)	10 (0.39)	
KF-T5A	5 (0.19)	3 (0.11)	2 (0.07)	—	80 (3.15) × 200 (7.87)
KF-T10	120 (4.72)	10 (0.39)	9 (0.35)	6 (0.23)	160 (6.29) × 300 (11.8)
KE-T20	—	—	—	—	—

Model HL HAND LIFMA*



HL-15



HL-20A

[Application]

Most suitable for pulling out steel material or steel sheet and carrying material, metal mold, press die and so on.

[Features]

- A new cam mechanism is employed so as not to apply friction due to holding and releasing directly to the surface of workpieces to transport. (HL-20A)
- Workpieces are held and released quite smoothly.
- The magnetic force can be turned on and off by lever operation. (HL-15)
- The T-handle is robust and fixed for stable workpiece transportation. (HL-15)

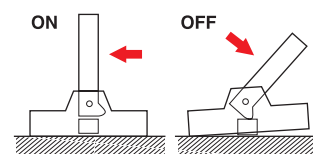
How to Use (HL-20A)

<Holding>

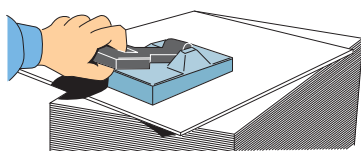
Place Hand Lifma on the carrying object with handle right up and pull it out after ensuring that it has attracted perfectly.

<Releasing>

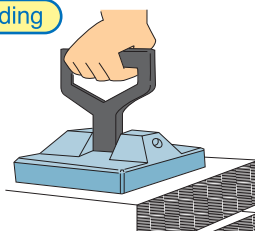
Hand Lifma releases the carrying object when the handle is turned in the off direction.



Releasing



Holding



Model	Holding Power		Dimensions			Handle Length	Mass
	Lateral Pulling	Lifting up	Width	Length	Height		
HL-15	350N (35kgf)	1.5kN (150kgf)	60 (2.36)	120 (4.72)	52 (2.04)	49 (1.92)	3.0kg/ 6.6 lb
HL-20A	500N (50kgf)	2kN (200kgf)	100 (3.93)	140 (5.51)	32 (1.26)	200 (7.87)	2.5kg/ 5.5 lb

*The holding power applies to 15mm thick soft steel. The holding power drops according to thicknesses and materials of workpieces. For safety, please use these products at a load that is one third or less of the values indicated in the table.

*Do not employ it as a hoist.