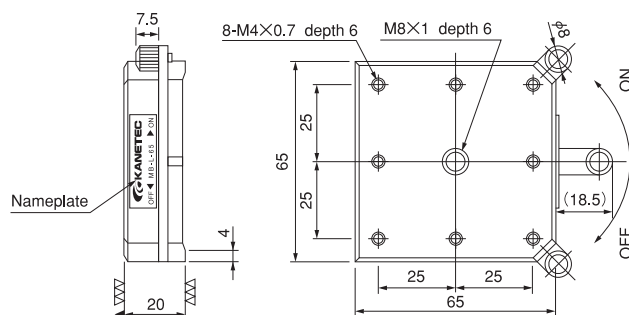


## Model MB MAGNETIC BASE

ELECTROMAGNETIC CHUCK  
CONTROLLERS  
PERMANENT MAGNETIC CHUCKS  
PERMANENT ELECTROMAGNETIC CHUCKS  
BLOCKS FOR MC  
VACUUM CHUCKS  
PROMELTA SYSTEM  
SINE BAR CHUCKS  
INJECTION MOLDING MACHINE MOLD FIXTURE



## Model MB-L MAGNETIC HOLDER



### [Application]

Suitable as a base for laser and other optical measurement. Because the ON-OFF holding power is adjustable, these are recommended where fine adjustment and accuracy are required.

### [Features]

- Easy ON-OFF operation using the lever.
- Thin and powerful magnetic force.

Model	Holding Power	Dimensions			Mounting Hole	Mass
		Width	Length	Height		
MB-L-45	65N (6.5kgf)	45 (1.77)	45 (1.77)	20 (0.78)	4-M4 (0.15) Depth 6 (0.23) (Span 25 (0.98))	0.3kg/0.6 lb
MB-L-65	200N (20kgf)	65 (2.55)	65 (2.55)	20 (0.78)	8-M4 (0.15) Depth 6 (0.23) (Span 25 (0.98))	0.6kg/1.3 lb
MB-L-90	250N (25kgf)	90 (3.54)	90 (3.54)	20 (0.78)	8-M4 (0.15) Depth 6 (0.23) (Span 25 (0.98))	1.0kg/2.2 lb

※ The holding power applies to SS400, thickness 25 mm and ground surface.

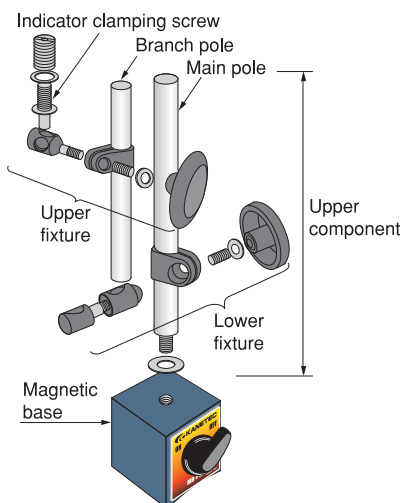
### [Application]

These magnetic bases are widely used as tool holders when measuring dimensions of machined workpieces (detecting errors and deviation) using a dial indicator on machine tools or iron surface plate for measurement by comparison.

### [Features]

- A wide variety of models, small to large, and with diversified additional functions, are available to suit conditions of measuring places.
- A powerful magnet and strong clamping force ensure consistent, highly accurate measurement.

<Names of major components of MB-B>



**Upper Fixture  
Model DG-8  
(Fixture for Mounting Dial Gage)**

● Upper fixture clamp with mounting hole size of  $\phi$  6.5/8.1mm, supplied optionally for MB-B, BV, F2, K (if  $\phi$ 8mm mounting hole is required).

Model **DG-8-B**  
(MB-B, BV, F2)

Model **DG-8-K**  
(MB-K)



An example of usage



Model	Holding Power	Magnetic Base			Main Pole		Sub Pole		Screw Threads			Clamp Hole Dia	Indicator Clamping Screw	Mass	Features	
		Width	Length	Height	Dia ϕ	Length	Dia ϕ	Length	Mag. Base	Step	Main Pole					
MB-B	800N ( 80kgf)	58 (2.28)			12 (0.47)	176 (6.92)	10 (0.39)	165 (6.49)	M 8 (0.31) × 1.25 (0.04)	—	M8 (0.31) × 1.25 (0.04)	4.5 (0.17) / 6.5 (0.25)	M6	1.5kg/ 3.3 lb	General, standard type.	
MB-BV								150 (5.90)							1.6kg/ 3.5 lb	General type with fine adjustment.
MB-F2															1.7kg/ 3.7 lb	Main pole 360° turning, can be locked at 75° maximum.
MB-K								1.8kg/ 4.0 lb						Main pole large diameter, suitable for precision measurement.		
MB-RV	1000N (100kgf)	50 (1.96)	73 (2.87)	55 (2.16)	16 (0.62)	225 (8.85)	14 (0.55)	165 (6.49)				6.5 (0.25) / 8.1 (0.31)		2.0kg/ 4.4 lb	Larger size with fine movement adjustment.	
MB-W2V																2.7kg/ 6.0 lb
MB-T3	1300N (130kgf)		117 (4.60)					200 (7.87)	M20 (0.78) × 1.5 (0.05)	M20 (0.78) / M10 (0.39)	M10 (0.39) × 1.25 (0.04)			4.1kg/ 9.1 lb	Main pole longest, base largest and holding power greatest.	
MB-FX	800N ( 80kgf)		58 (2.28)		16 (0.62)	315 (12.4)	—	—	M8 (0.31) × 1.25 (0.04)	—	M8 (0.31) × 1.25 (0.04)	6.0 (0.23) / 8.1 (0.31)	—	1.5kg/ 3.3 lb	Flexible type settable bent freely.	
MB-W2S	1000N (100kgf)		73 (2.87)		20 (0.78)	178 (7.00)	14 (0.55) 12 (0.47)	165 (6.49) 130 (5.11)							4.5 (0.17) / 6.5 (0.25)	M6
MB-PSL	300N ( 30kgf)	30 (1.18)	34 (1.33)	35 (1.37)	7 (0.27)	54 (2.12)	—	—	M5 (0.19) × 0.8 (0.03)		M5 (0.19) × 0.8 (0.03)	6.0 (0.23)	—	0.27kg/ 0.6 lb	Compatc and simple, suitable for narrow space.	

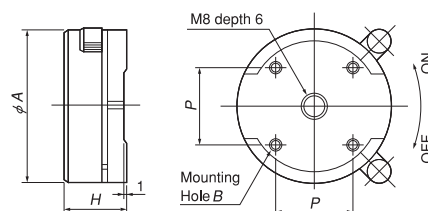
※ Upper fixture, Model DG-8 (attaching hole of  $\phi$ 6.5/8.1), for attaching dial gauge is optionally supplied. ※ The holding power applies to SS400, thickness 10 mm and ground surface.

## Model MB-L-C MAGNETIC HOLDER



Model	Holding Power	Dimensions		Mounting Hole		Mass
		A	H	P	B	
MB-L-C50	59N ( 6kgf)	50 (1.96)	20 (0.78)	25 (0.98)	M4 (0.15) Depth 6 (0.23)	0.30kg/0.6 lb
MB-L-C75	196N (20kgf)	75 (2.95)	20 (0.78)	35 (1.37)	M4 (0.15) Depth 6 (0.23)	0.68kg/1.5 lb

※ The holding power applies to SS400, thickness 25 mm and ground surface.



### [Application]

Suitable as a base for laser and other optical measurement. Because the ON-OFF holding power is adjustable, these are recommended where fine adjustment and accuracy are required.

### [Features]

- Easy ON-OFF operation using the lever.
- Thin and powerful magnetic force.

ELECTROMAGNETIC CHUCKS  
CHUCK CONTROLLERS  
PERMANENT MAGNETIC CHUCKS  
PERMANENT ELECTROMAGNETIC CHUCKS  
BLOCKS FOR MC  
VACUUM CHUCKS  
PROMELTA SYSTEM  
SINE BAR CHUCKS  
INJECTION MOLDING MACHINE MOLD FIXTURE  
WORKING TOOLS  
MAGNETIC BLOCKS  
MEASURING TOOL HOLDERS  
MEASURING TOOLS

## Model MB-MX HIGH LOCK BASE

### Mechanical lock & fine movement adjuster

**Tightening torque + clamp force + fine adjustment function, all improved!**



*Free style by dial adjustment*



Dial gage is optional



Holding Power  
600N

MB-MX13F

Holding Power  
800N

MB-MX20F

Holding Power  
1000N

MB-MX28F

Holding Power  
1000N

MB-MX40F

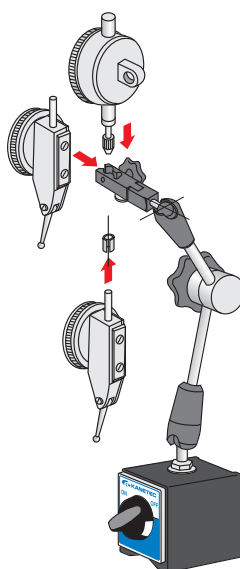
## Consistent and highly accurate measurement

### [Application]

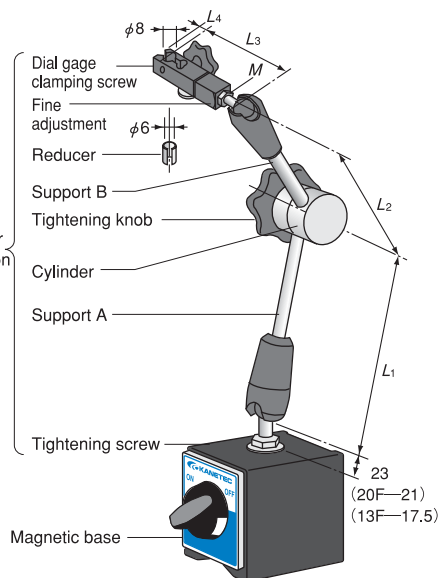
While these bases are used as measuring tool holders, like magnetic bases, they can also be used to hold sensors in place.

### [Features]

- Any position can be set by tightening a knob to lock every part.
- The clamp system is adjustable steplessly. Light turn achieves it.
- **Quick lock mechanism.**
- A wide variety of models, small to large, are available to suit your applications.
- The dial gage mounting part can be adjusted finely.
- The arm can be adjusted freely in angle and direction and provides stable, shake free positioning.



<Dial gage mounting>



<Component names/Dimensions>

Model	Lock Mechanism	Holding Power	Magnetic Base			Arm					Tapped Hole	Indicator Clamp		Mass	Features
			Width	Length	Height	L <sub>1</sub>	L <sub>2</sub>	L <sub>3</sub>	L <sub>4</sub>	M		Stem Hole	Dovetail		
MB-MX13F	Mechanical Type	600N ( 60kgf)	40 (1.57)	40 (1.57)	40 (1.57)	57 (2.24)	46.5 (1.83)	61.5 (2.42)			M6 (0.23) × 1 (0.03)	φ8 (0.31)  φ6 (0.23) (When reducer is used)		0.8kg/1.7 lb	Smallest type
MB-MX20F		800N ( 80kgf)		58 (2.28)		95 (3.74)	71 (2.79)			M6 (0.23) × 10 (0.39)			6.5 (0.25)	1.4kg/3.1 lb	Small type
MB-MX28F			50 (1.96)	73 (2.87)	55 (2.16)	137 (5.39)	109.5 (4.31)	63.5 (2.50)	6.5 (0.25)		M8 (0.31) × 1.25 (0.04)			2.1kg/4.6 lb	Standard type
MB-MX40F		1000N (100kgf)				197 (7.75)	170 (6.69)			M6 (0.23) × 12 (0.47)				2.2kg/4.8 lb	Long arm type

※ The holding power applies to SS400, thickness 10 mm and ground surface.

## Model MB-X HIGH LOCK MINI BASE

### Mechanical lock type



**Small and simple, suitable for use in limited space.**

#### [Application]

While these bases are used as measuring tool holders like magnetic bases, they can also be used to hold sensors in place.

#### [Features]

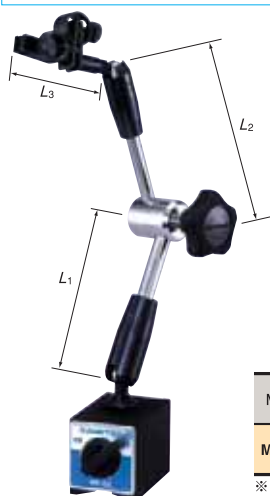
- A mechanical lock system that tightens joints in three places by one operation.
- The arm can be adjusted freely, which facilitates locating the mounted measuring instrument.

Model	Lock Mechanism	Holding Power	Magnetic Base			Arm			Tapped Hole	Indicator Clamp		Mass	Features
			Width	Length	Height	L <sub>1</sub>	L <sub>2</sub>	L <sub>3</sub>		Stem Hole	Dovetail		
MB-CX	Mechanical Type	160N (16kgf)	28 (1.10)	28 (1.10)	29 (1.14)	46	46	39	M5 (0.19) × 0.8 (0.03)	φ6 (0.23)	6.5	0.38kg/	Small, V attractive face
MB-PSX		300N (30kgf)	30 (1.18)	34 (1.33)	35 (1.37)	(1.81)	(1.81)	(1.53)		×2	(0.25)	0.8 lb	Small, magnet switchover

※ The holding power applies to SS400, thickness 10 mm and ground surface.

## Model MB-OX HIGH LOCK BASE

### Hydraulic & fine adjuster



MB-OX  
Holding Power  
1000N

#### [Application]

While these bases are used as measuring tool holders like magnetic bases, they can also be used to hold sensors in place.

#### [Features]

- A mechanical lock system that tightens joints in three places by one operation.
- The arm can be adjusted freely, which facilitates locating the mounted measuring instrument.
- Fine adjustment.



Dial gage is optional.

Model	Lock Mechanism	Holding Power	Magnetic Base			Arm			Tapped Hole	Indicator Clamp		Mass	Features
			Width	Length	Height	L <sub>1</sub>	L <sub>2</sub>	L <sub>3</sub>		Stem Hole	Dovetail		
MB-OX	Hydraulic Type	1000N (100kgf)	50 (1.96)	73 (2.87)	55 (2.16)	140 (5.51)	110 (4.33)	81 (3.18)	M8 (0.31) × 1.25 (0.04)	φ8 (0.31)	6.5 (0.25)	2.0kg/	Standard type
										φ6 (0.23)		4.4 lb	

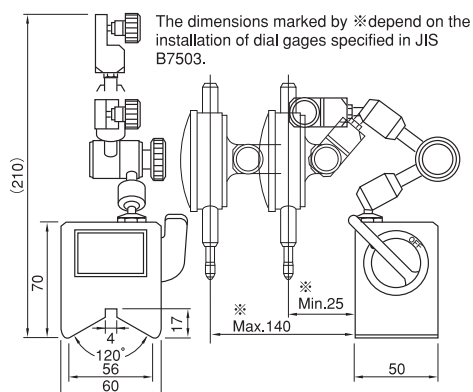
※ The holding power applies to SS400, thickness 10 mm and ground surface.

## Model MB-S BORER BASE\*



Holding Power  
250N  
at φ70

MB-S12B



#### [Application]

Useful for measuring the projected amount of a cutter mounted on the arbor of a boring machine with a dial gage to locate the cutter precisely.

#### [Features]

- The measuring tool holding arm can be freely locked by single operation, which makes this base suitable for any length between its mounting position and the tip of the cutter.
- Since a magnetic force is used for holding, the dial gage is held firmly even if it is mounted inclined. Further, the magnetic force can be turned on and off for easy installation and removal.
- The dial gage is mounted by tightening a lug with an M6 bolt.

Model	Holding Power	Arbor Diameter	Holding Area Dimensions		Mass
			Width	Angle	
MB-S12B	250N (25kgf) at φ70 (2.75)	φ15 (0.59) — 120 (4.72)	56 (2.20)	120°	1.3kg/2.8 lb

ELECTROMAGNETIC CHUCKS

CHUCK CONTROLLERS

PERMANENT MAGNETIC CHUCKS

PERMANENT ELECTROMAGNETIC CHUCKS

BLOCKS FOR MC

VACUUM CHUCKS

PROMELTA SYSTEM

SINE BAR CHUCKS

INJECTION MOLDING MACHINE MOLD FIXTURE

WORKING TOOLS

MAGNETIC BLOCKS

MEASURING TOOL HOLDERS

MEASURING TOOLS



Model ME MAGNETIC LAMP STAND

Standard type



Holding Power  
800N

ME-2CA

Tall type



Holding Power  
1000N

ME-L2C

Fluorescent lamp type



Holding Power  
1000N

ME-F1C

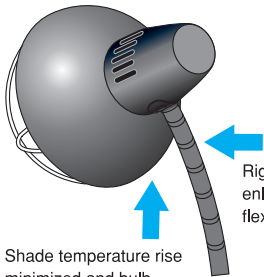
Outdoor type



Holding Power  
1000N

ME-5RA

100VAC/200W bulb included.



Shade temperature rise minimized and bulb protected from dust.

Rigidity increased by enlarging diameter of flexible tube.

※A bulb is not included except for ME-5RA. Use a bulb of base E26.

[Application]

The magnetic lamp stands allow the magnet to be turned on and off quickly, and thus can easily be installed in any place, removed and relocated. These stands are most suitable for illumination of work areas on workbenches or machine tools.

Thanks to a strong holding power by a small and light weight, yet strong magnet, these stands can easily be mounted not only on a horizontal face, but inclined face and vertical face. The flexible tube enables it to obtain an optimum illuminating angle.

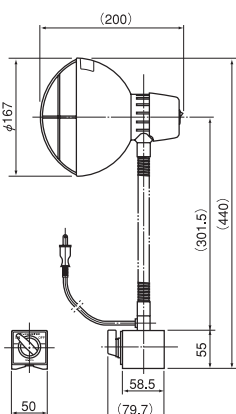
[Features]

- While the installation position is fixed by the attractive face, an illuminating direction can be changed freely.
- The protective guard protects the bulb from breakage when the lamp falls.
- The employment of an oil resistant power cord enables these stands to be used in various workplaces.

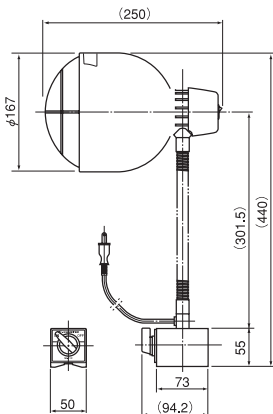
[mm (in.)]						
Model	Type	Holding Power	Height	Cord Length	Illumination Rating	Mass
ME-2CA	Standard type	800N	440 (17.3)	1.6m (62.9)	100 VAC Upper limit 100W, optimum 60W	1.3kg/2.8 lb
ME-2CA-R	Reflective plate type	(80kgf)			100 VAC Upper limit 100W, optimum 40W	1.5kg/3.3 lb
ME-L2C	Tall type	1000N	704 (27.7)	5.0m (196.8)	100 VAC Upper limit 100W, optimum 60W	1.7kg/3.7 lb
ME-F1C	Fluorescent lamp type		440 (17.3)			2.0kg/4.4 lb
ME-5RA	Outdoor type	240 (9.44)	240 (9.44)	5.0m (196.8)	100 VAC 200W	1.3kg/2.8 lb

※A 100VAC/200W bulb is included with ME-5RA only.  
※When using a stand with 100W incandescent lamp for long hours, no rating problem arises, but caution against overheating when handling it.  
※Depending on the dimensions of bulb type fluorescent lamp, they may be used on ME-2CA.  
※The holding power applies to SS400, plate thickness 10 mm and ground surface.

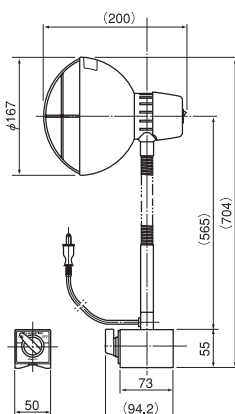
〈ME-2CA〉



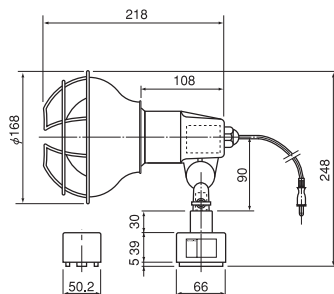
〈ME-F1C〉



〈ME-L2C〉



〈ME-5RA〉



Reflective plate type

## Most suitable for cost reduction + energy saving + inspection work! Magnetic lamp stand with reflective plate

[Application]

Thanks to the effect of a high performance special reflective plate, illuminance of more than 100W can be obtained using a 60W bulb, saving power consumption significantly. Also "heat", a weak point of incandescent lamps, can be reduced.

[Features]

- Illuminance tripled and heat generation reduced 50%. Great energy saving
- Problems associated with incandescent lamps having good color rendering \* have been resolved.
- Long-hour work does not cause eye fatigue and thus this model is most suitable for visual inspections and reading fine scales on measuring instruments.

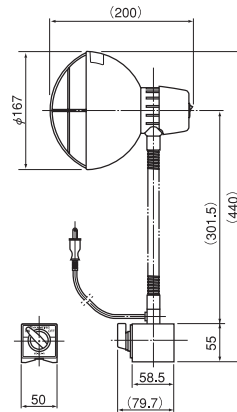
※ **Color rendering**...A level of easiness of reading vernier scales and fine articles.



Comparison of illuminance with and without special reflective plate

Bulb	With reflective plate	Without reflective plate
40W	850	300
60W	1300	420
100W	2100	640

※ No bulb is included. Use a bulb of base E26.



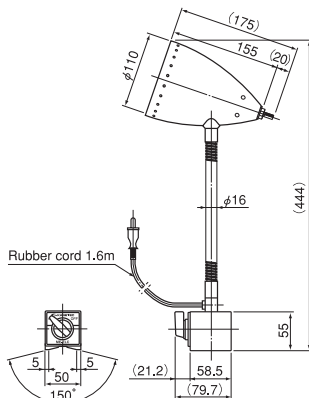
Holding Power  
800N  
ME-2CA-R

Energy saving lamp type

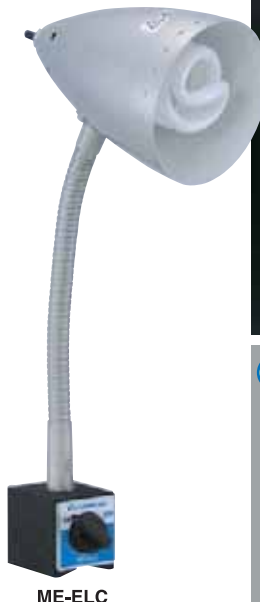
## Energy saving lamp type: Energy saving & long life! Magnetic lamp stand with energy saving lamp

[Features]

- Latest energy saving lamp employed.
  - A spiral type fluorescent lamp having high luminous intensity distribution efficiency is used.
  - A lamp equivalent to 16W (100V) is as bright as a 60W incandescent lamp.
- Heat generated during operation has been reduced significantly. When compared with temperature rise of a 60W incandescent lamp, temperature is lower by about 40%.
- A long life; a service life is 5 times longer than incandescent lamps. Average life as long as 10,000 hours.
- Small and light weight shade employed.
- Safe
  - The lamp is housed inside the shade, which protects the lamp from being broken when it falls.



Holding Power  
800N



ME-ELC



Dedicated fluorescent lamp



**Precautions for use**

- A lamp must be of the correct rating. The use of a lamp exceeding the rating will cause injury or accident due to heat.
- For replacement lamps, please use Kanetec recommended lamps for safe operation. Please contact your nearest dealer or Kanetec sales office.

[mm (in)]

Model	Type	Holding Power	Cord Length	Illumination Rating	Attached Lamp	Socket	Mass
ME-ELC	Energy saving lamp type	800N (80kgf)	1.6m (62.9)	100 VAC Upper limit 60W Optimum 40W	16W (100 VAC)	E26	1.6kg/3.5 lb

※ The holding power applies to SS400, thickness 10 mm and ground surface.

ELECTROMAGNETIC CHUCKS

CHUCK CONTROLLERS

PERMANENT MAGNETIC CHUCKS

PERMANENT ELECTROMAGNETIC CHUCKS

BLOCKS FOR MC

VACUUM CHUCKS

PROMELTA SYSTEM

SINE BAR CHUCKS

INJECTION MOLDING MACHINE MOLD FIXTURE

WORKING TOOLS

MAGNETIC BLOCKS

MEASURING TOOL HOLDERS

MEASURING TOOLS

# MEASURING TOOL HOLDERS

## Model MR MAGNETIC LENS STAND MAGLENS\*

### [Application]

Very useful for accurate readings of the smallest graduations on measuring instruments.

### [Features]

- The large diameter lens protects your eyes from fatigue and is easy to read.
- Angle of Maglens is freely adjustable with its flexible neck; and the lens is also turnable.

[mm (in)]

Model	Holding Power	Flexible tube Length	Lens Dia	Focus Distance	Magnification	Mass
MR-2C	800N (80kgf)	257 (10.1)	φ 100 (3.93)	250 (9.84)	×2	1.5kg/3.3 lb

※ The holding power applies to SS400, thickness 10 mm and ground surface.



MR-2C  
Holding Power  
800N

## Model MB-P MAGNETIC HOLDER BASE



MB-PB  
Holding Power  
800N



MB-PR  
Holding Power  
1000N



MB-PRW  
Holding Power  
600N



MB-PL  
Holding Power  
1300N



MB-PH  
Holding Power  
1250N



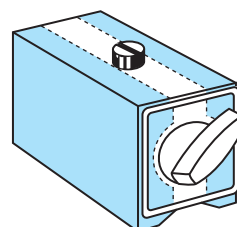
MB-PG  
Holding Power  
1500N




MB-PM  
Holding Power  
600N



MB-PS  
Holding Power  
300N





### Workable area on magnetic holder base

Some working such as drilling is allowed in the  area.

Detailed dimensions are found on page 63. 

[mm (in)]

Model	Holding Power	Dimensions			Tapped Hole	Hold Face Form	Mass
		Width	Length	Height			
MB-PB	800N (80kgf)	50 (1.96)	58 (2.28)	55 (2.16)	M 8 (0.31) × 1.25 (0.04) Depth 7 (0.27)		1.0kg/2.2 lb
MB-PR	1000N (100kgf)		73 (2.87)				1.3kg/2.8 lb
MB-PRW	600N (60kgf)		117 (4.60)				1.2kg/2.6 lb
MB-PL	1300N (130kgf)		70 (2.75)				2.0kg/4.4 lb
MB-PH	1250N (125kgf)	40 (1.57)	70 (2.75)	80 (3.15)	M12 (0.47) × 1.75 (0.06) Depth 11 (0.43)		2.5kg/5.5 lb
MB-PM	600N (60kgf)	40 (1.57)	40 (1.57)	40 (1.57)	M6 (0.23) × Depth 6 (0.23)		0.5kg/1.1 lb
MB-PS	300N (30kgf)	30 (1.18)	34 (1.33)	35 (1.37)	M5 (0.19) × Depth 4 (0.15)		0.2kg/0.4 lb
MB-PG	1500N (150kgf)	50 (1.96)	120 (4.72)	52 (2.04)	M 8 (0.31) × 1.25 (0.04) Depth 7 (0.27)		1.8kg/3.9 lb

※ The holding power applies to SS400, thickness 10 mm and ground surface. ※ MB-PRW is of waterproof construction.

### [Application]

Available in a wide range of sizes from minimum and medium to large.

These on-off switchable magnetic holder bases meet various application.

Usable as a tacking base for equipment, and/or a measuring base for laser use (by installing jigs in the screw holes or, if necessary, with slight additional machining).

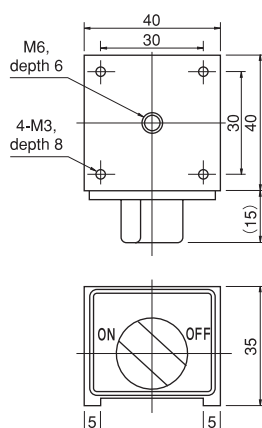
### [Features]

- Compact in size, yet it delivers a strong magnetic force.
- Either a V-slot and/or flat attractive face is provided. The face opposite to the change-over switch face is also attractive. (MB-PH, MB-PM and MB-PS excluded)
- Although screw holes are provided, some working is possible as shown.

## Model MB MAGNETIC BASE



**MB-0404**  
Holding Power  
**200N**  
or over



### [Application]

This base can be used widely as a magnetic force ON/OFF type magnetic base. It is designed small and is useful as a base for temporarily mounted legs of equipment, sensors and lasers by mounting a jig using tapped holes or by some additional machining.

### [Features]

- The base can be mounted and demounted easily using the select lever.
- Compact but powerful magnetic force.
- dripproof and oilproof construction.

Model	Holding Power	Dimensions			Mounting Hole	Mass
		Width	Height	Length		
<b>MB-0404</b>	200N (20kgf) or over	40 (1.57)	35 (1.37)	40 (1.57)	4-M3 (0.11) Depth 6 (Span30 (1.18))	0.4kg/0.8 lb

※ The holding power applies to SS400, thickness 25 mm and ground surface.

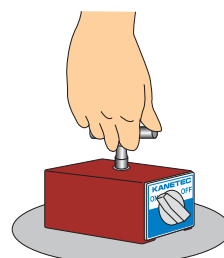
## Model KM-B RULER HOLDER



**KM-B2**  
Holding Power  
**1500N**



**KM-B1**  
Holding Power  
**800N**



### [Application]

Useful for a wide variety of operations; holding down a large ruler on a floor or wall during machining of iron plates, etc. and moving workpieces after cutting or holding and removing chips.

※ If used at high temperature, the holding power may drop.

※ For transporting heavy workpieces, Model HL-15 (P76) having a reinforced grip to withstand the weight is available.

### [Features]



- Attachable and detachable easily by changeover lever.
- Attractive face is made in V-slot for KM-B1 and in inverted concave for KM-B2.

Model	Holding Power	Base Dimensions			Tapped Hole	Mass
		Width	Length	Height		
<b>KM-B1</b>	800N (80kgf)	50 (1.96)	58 (2.28)	55 (2.16)	M 8 (0.31) × 1.25 (0.04) Depth 7 (0.27)	1.1kg/2.4 lb
<b>KM-B2</b>	1500N (150kgf)		120 (4.72)	52 (2.04)		1.9kg/4.2 lb

※ The holding power applies to SS400, thickness 10 mm and ground surface.

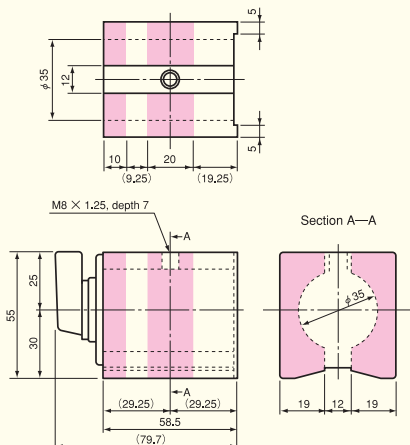


## ※Precautions

- 1) The  (shaded) areas shown in the following figures can be worked.
- 2) If areas (magnet, separator, main unit construction) other than the  (shaded) areas have been worked, the ON-OFF operation may be disabled or the main unit may be damaged, or, disabled in the worst case.
- 3) Additional working may result in a drop in the holding power and strength. Prior to using the base after additional working, always check its capacity.
- 4) If a plate is to be installed on the top face (tapped holes provided), be sure to use a nonmagnetic material (e.g. aluminum, SUS304, brass plate). If a magnetic material such as iron is mounted/installed to the top face, the holding power will drop significantly.

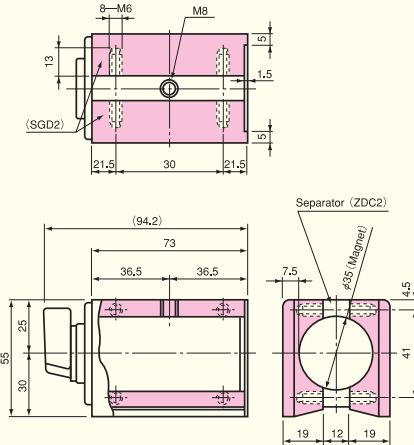
## Common base type

MB-B/MB-BV/MB-K/MB-FX  
MB-MX20F/KM-B1



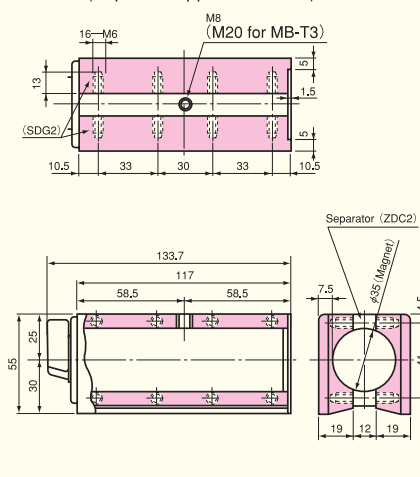
## Common base type

MB-RV/MB-W2V/MB-W2S/MB-MX28F/  
MB-MX40F/MB-OX



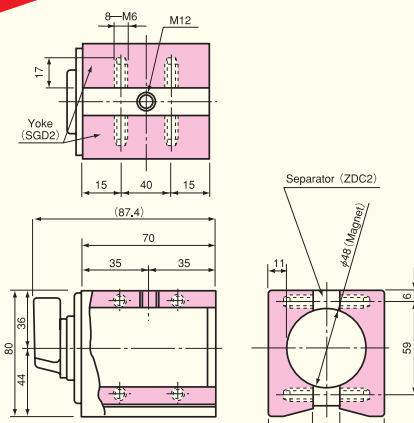
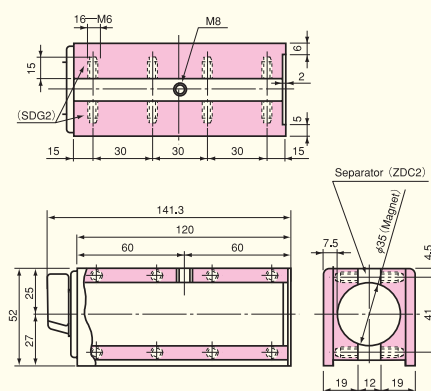
## Common base type

**MB-T3** (Top face tapped hole M20)

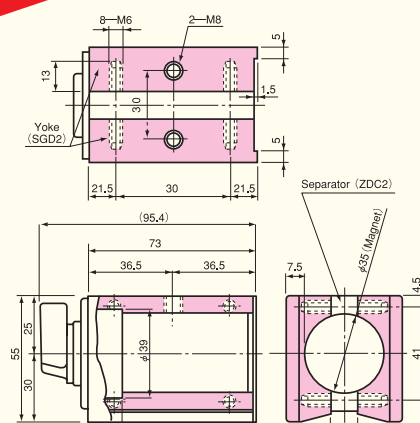


## Common base type

KM-B2

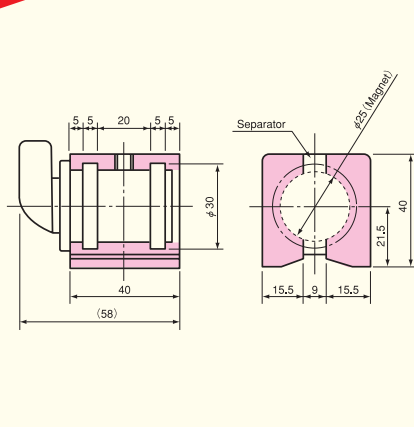
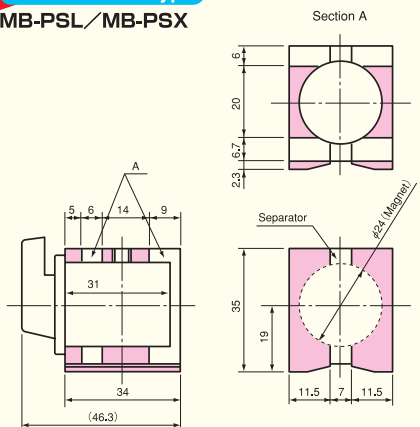


8-M6 2-M

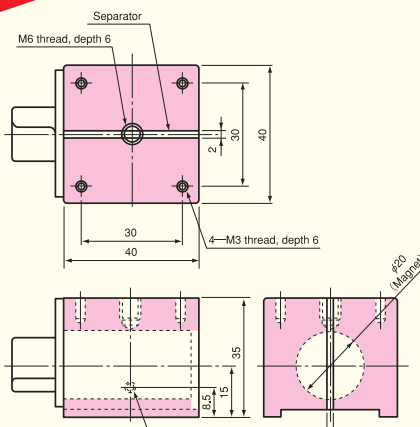


## Common base type

MB-PSL/MB-PSX



Separator

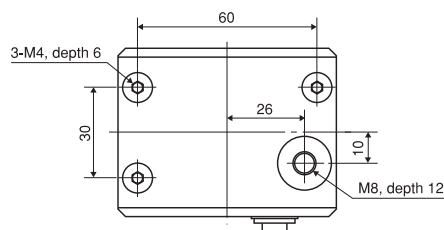


Model **MBE** MOBITY\* (ONE-TOUCH BASE)

Excellent for use in clean rooms!



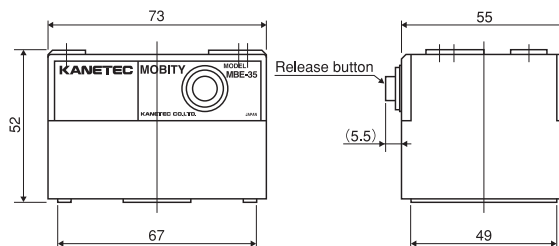
MBE-35



An example of usage of laser displacement gage



An example of usage of micro checker



[Application]

Most suitable as a temporary mounting base for laser and other optical measurement.  
The magnetic force can be changed over with a finger tip quickly. "One-touch" and "soft-touch" ON/OFF changeover is possible.

[Features]

- The magnetic force can be turned on and off with a single hand to enable fine positioning quickly.
- Since this is not of mechanical changeover construction, there are no parts that are worn by ON/OFF operations, thus making this model suitable for use in clean rooms.
- Light weight and compact, yet strong holding power.
- Various measuring instruments can be mounted with M8 and M4 tapped holes on the top face to expand applications further.

[mm (in)]

Model	Holding Power	Dimensions			Mounting Hole	Mass
		Width	Length	Height		
MBE-35	400N (40kgf)	73 (2.87)	55 (2.16)	52 (2.04)	1 (0.03) -M8 (0.31) Depth12 (0.47) / 3 (0.11) -M4 (0.15) Depth 6 (0.23)	0.7kg/1.5 lb

※ The holding power applies to SS400, thickness 25 mm and ground surface.

ELECTROMAGNETIC CHUCKS  
CHUCK CONTROLLERS  
PERMANENT MAGNETIC CHUCKS  
PERMANENT ELECTROMAGNETIC CHUCKS  
BLOCKS FOR MC  
VACUUM CHUCKS  
PROMELTA SYSTEM  
SINE BAR CHUCKS  
INJECTION MOLDING MACHINE MOLD FIXTURE  
WORKING TOOLS  
MAGNETIC BLOCKS  
MEASURING TOOL HOLDERS  
MEASURING TOOLS