

WiFi DIGITAL MEASURING MICROSCOPE

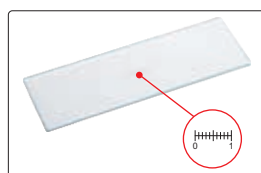
CODE ISM-WF200*



optional stand (code: ISM-WSTD)



calibration rule (graduation 1mm)



calibration rule (graduation 0.1mm)

- Maximum working distance is 5 m under WiFi mode
- Can be connected to multiple iPads or computers at the same time under WiFi mode
- Can take pictures and videos
- Supplied with software

SPECIFICATION

| | |
|----------------------|-------------------------------|
| Magnification | 10X ~ 200X |
| Pixel | 1.3M (resolution: 1280x1024) |
| Illumination | built-in adjustable LED |
| Power supply | built-in rechargeable battery |

MAGNIFICATION, FOCUS DISTANCE, VIEW FIELD AND ACCURACY

| Magnification | Focus distance | View field | Accuracy |
|---------------|----------------|------------|----------|
| 50X | 21mm | 8.1×6.4mm | 30μm |
| 100X | 13mm | 3.9×3.1mm | 15μm |
| 150X | 16mm | 2.6×2.1mm | 10μm |
| 200X | 19mm | 1.8×1.5mm | 8μm |

STANDARD DELIVERY

| | |
|--|-----|
| Microscope | 1pc |
| Base support | 1pc |
| Focus support ring for 80X/150X | 1pc |
| Focus support ring for 60X/200X | 1pc |
| Calibration rule (graduation 0.1mm) | 1pc |
| Calibration rule (graduation 1mm) | 1pc |
| USB cable and software | 1pc |
| AC/DC adapter | 1pc |

OPTIONAL ACCESSORY

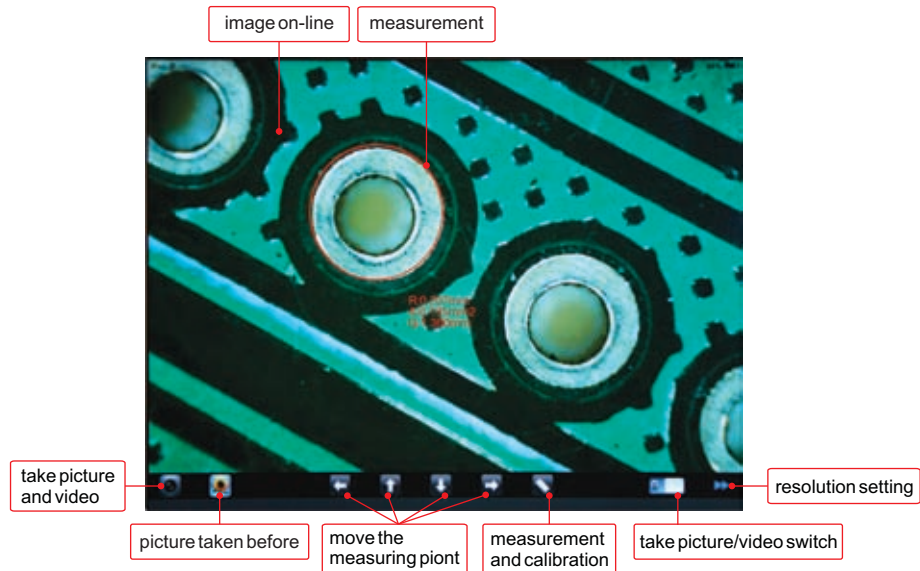
| | |
|--------------|-----------------|
| Stand | ISM-WSTD |
|--------------|-----------------|

* Add suffix on code No. to devote AC voltage and plug

to be continued

continued from previous page

1 Software ISM-PAD(for iPad by WiFi)



■ Measurement:



measure length of line or distance between two points

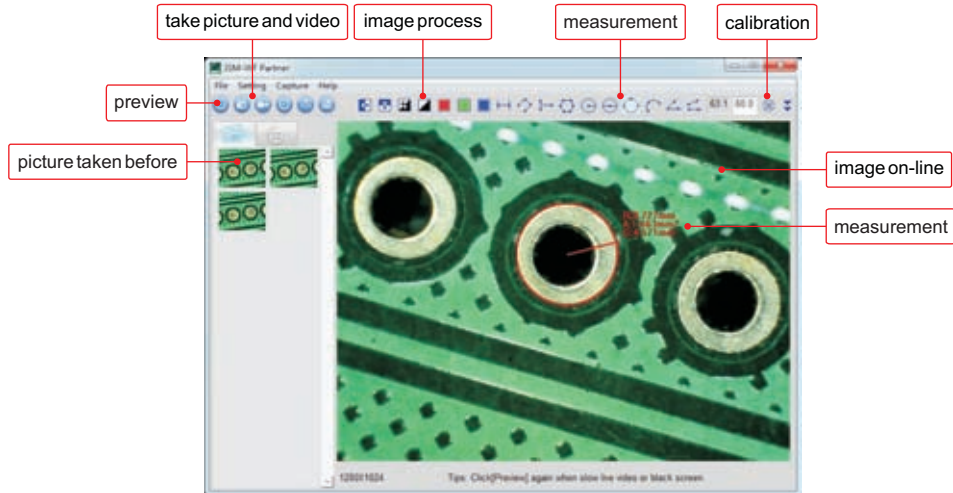


measure radius, girth and area of circle with three points



measure angle

2 Software ISM-WF Partner(for computer by WiFi)



■ Measurement:



measure length of line or distance between two points



measure length of continuous line



measure distance between point and line



measure area of polygon



measure radius, girth and area of circle with three points



measure radius, length and angle of arc



measure angle with three points



measure angle with two lines



measure area of rectangle



measure radius, girth and area of circle with center point

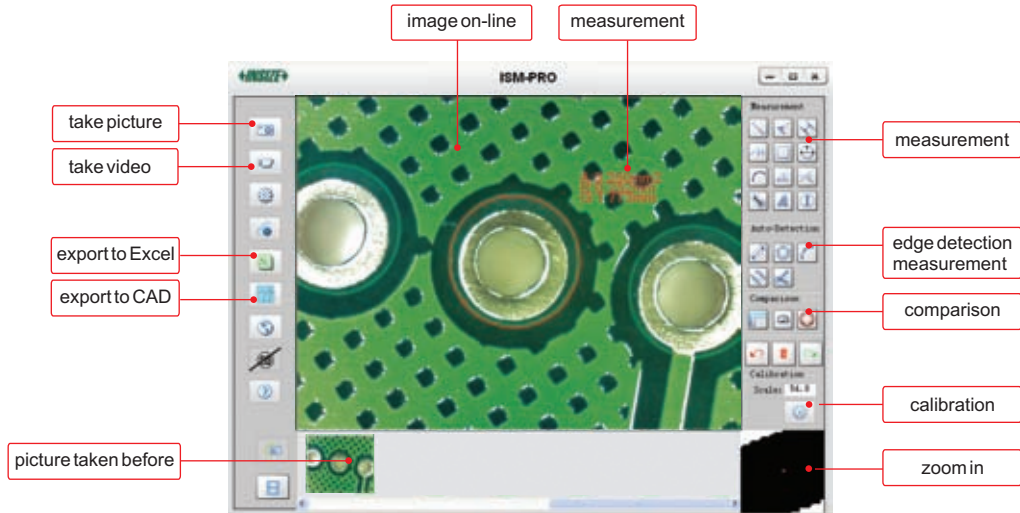


measure radius, girth and area of circle with two points

to be continued

continued from previous page

3 Software ISM-PRO(for computer by USB cable)



■ Measurement:

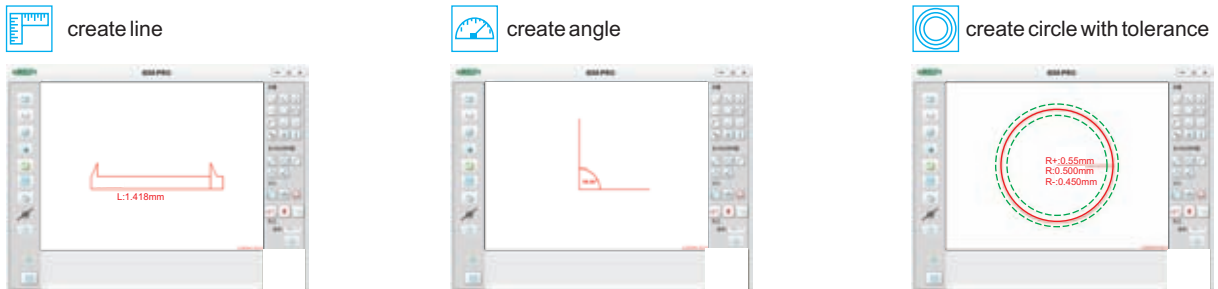
- | | | | | | |
|--|---|--|---|--|--|
| | measure length of line or distance between two points | | measure distance between point and line | | measure distance between two parallel lines |
| | measure length of continuous line | | measure area of rectangle | | measure radius, girth and area of circle with three points |
| | measure radius, length and angle of arc | | measure angle with three points | | measure angle with two lines |
| | measure distance between two circles | | add text | | add number with circle |

■ Edge detection measurement:

- | | | | |
|--|--|--|---|
| | detect line automatically, and calculate length | | detect circle automatically, and calculate radius, girth and area |
| | detect arc automatically, and calculate radius, angle and arc length | | detect two parallel lines automatically and calculate distance |
| | detect two lines automatically, and calculate angle | | |

■ Comparison:

Create line, angle or circle with desired size, to compare with workpieces.



■ Data export to CAD or Excel:

